

Appliances Guidelines (Microwave, Fridge, & Toaster)

Full Size

STAFF MICROWAVE

Capacity: 0.7 - 1.6 cu ft
Power: 700 - 1150 W
Exterior Finish: Stainless Steel
Mounting: Counter or Cabinet-mounted



STAFF TOASTER

Capacity: 4 slice
Grade: Commercial
Style: Countertop
Exterior Finish: Stainless Steel
Cord: NEMA 5-15P; 3-ft length



STAFF REFRIGERATOR

Capacity: 10-23 cu ft
Grade: Commercial/Professional
Style: No freezer
Exterior Finish: Stainless Steel
Interior Shelving: Wire
Cord: Hospital-grade
Certification: EnergyStar preferred

Under Counter

STAFF REFRIGERATOR - UNDERCOUNTER

Capacity: 4.2 - 4.5 cu ft
Grade: Commercial/Professional
Style: No freezer
Exterior Finish: Stainless Steel
Interior Shelving: Wire
Cord: Hospital-grade
Certification: EnergyStar preferred

LACTATION ROOM REFRIGERATOR - UNDERCOUNTER

Capacity: 1.0 cu ft
Grade: Purpose-built for environments complying with Section 4207 of the Patient Protection and Affordable Care Act
Style: Undercounter with interior shelving (no "lockers")
Exterior Finish: Antimicrobial
Interior Shelving: Adjustable plastic-coated wire shelves
Cord: Hospital-grade



* Specification deviations allowed per PM approval-(photos are just examples)*

Appliances Guidelines (Ice Machines)

ICE MACHINE - CLINICAL

1. Preferred Machine

Manufacturer: Hoshizaki

Model #: DCM271BAH (table top unit)

2. Alternate Machine

Manufacturer: Manatowoc

Model #: CNF0201AL

3. Performance Specifications:

Capacity: Production capacity up to 618 lb per 24 hrs at 70/50 degrees; Up to 40 lbs of built-in storage capacity (1.3ft³)

Style: Countertop; legs optional

Plumbing: 1/2" FPT Inlet, Minimum 1/4" Nominal ID Copper Water Tubing or Equivalent, 3/4" FPT Outlet, Minimum 3/4" Nominal ID Drain Hard Pipe or Equivalent

Ice Shape: Cubelet

Exterior Finish: Stainless steel

Interior Finish: Stainless steel

Certification: NSF, UL, EnergyStar preferred

1



2



ICE MACHINE - RESEARCH

4. Capacity: 330 lb. of ice production per 24 Hours

Style: Countertop; legs optional

Ice Shape: Flakes

Exterior Finish: Stainless steel

Interior Finish: Stainless steel

Certification: NSF, UL, EnergyStar preferred

* Specification deviations allowed per PM approval-(photos are just examples)*

Appliances Guidelines (Water Cooler)

WATER COOLER/FILTER

Style: Countertop

Water Temp: Hot & Cold water;

Room temp optional

Cold water rate: 0.6 - 1.0 Gal per hour at
50 deg F

Hot water rate: 1.8 Gal per hour at
185 deg F

Exterior Finish: Plastic

Interior Finish: Stainless steel

Certification: EnergyStar preferred

* Facilities will provide water connection, but department is responsible for purchasing filter

* Specification deviations allowed per PM approval-(photos are just examples)*





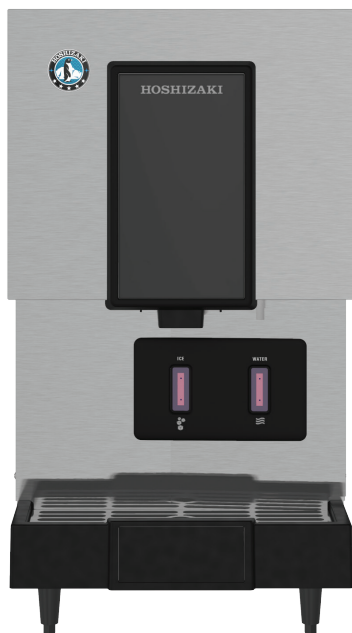
DCM-271BAH-OS



DCM-271BAH-OS
02/01/21
Item # 13574

OPTI-SERVE SERIES CUBELET ICE MACHINE AND WATER DISPENSER

W x D x H
165/8" x 24 1/4" x 31 3/4" *
*including 4" legs





Hands-free sensor designed for use with opaque containers. Not intended for outdoor use - avoid placement in direct sunlight.



Features

- ▶ Opti-Serve touchless ice and water
- ▶ 10 1/4" cup clearance
- ▶ Quieter operation
- ▶ ADA Compliant 

- Attractive modern design
- Easy to chew, Cubelet ice
- Up to 257 lbs. of ice production per 24 hours
- Built-in storage capacity of 0.3ft³/10 lbs.*
- Durable stainless steel drain pan grate
- Easy-cleaning removable spout
- 2-second flush cycle every hour
- Advanced CleanCycle24™ design 
- Protected by H-GUARD Plus Antimicrobial Agent 
- 6 ft. cord with a NEMA 5-15 plug
- R-404A Refrigerant

Warranty:

3 Year Parts & Labor on entire machine.
5 Year Parts on Compressor; air-cooled condenser coil.
Valid in United States, Canada, Puerto Rico and U.S. Territories. Contact factory for warranty in other countries.

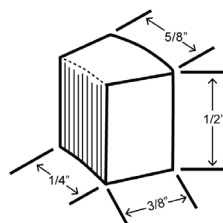
*Rated in accordance with AHRI Standard 820(I-P). Capacity based on 100% of total volume x 30 lb/ft³ average density of ice.

Shipping: (LxWxH) 20.88" x 30.63" X 36.25" Volume: 13.42ft³

Condenser	Model	ICE PRODUCTION		WATER USAGE		ELECTRICAL				Heat Rejection BTU/hr.	Refrigerant Charge Amount	Net / Ship Weight (lbs.)
		Air / Water Temp Lbs. per 24 hours 70°/ 50°F 90°/ 70°F	Potable Gal. per 100 lbs. 90°/ 70°F	Condenser Gal. per 100 lbs. 90°/ 70°F	kWh Used per 100 lbs. 90°/ 70°F	Max. Fuse Size or HACR Circuit Breaker	Amperage	Voltage				
Air-Cooled	DCM-271BAH-OS	257	196	12.0	N/A	6.9	15A	8.5A	115V/60/1	3,300	14.8 oz	136 / 154

Power cord included.

Cubelet Dimensions*



* approximate size in inches, image not to scale

Operating Limits

- Ambient Temp Range 45 - 100°F
- Water Temp Range 45 - 90°F
- Water Pressure 10 - 113 PSIG
- Voltage Range 104 - 127V

Service

- Allow 6" (15cm) clearance at rear and sides for proper air circulation and ease of maintenance and/or service should they be required. Allow 24" (61 cm) clearance at top to allow for removal of auger.

Not intended for outdoor use - avoid placement in direct sunlight.

Plumbing

- Icemaker Water Supply Line: Minimum 1/4" Nominal ID Copper Water Tubing or Equivalent
- Icemaker Drain Line: Minimum 3/4" Nominal ID Hard Pipe or Equivalent
- 3/4" MPT drain

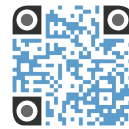
Water Filter

Please refer to water filter specification sheet for recommendations.

Hoshizaki reserves the right to change specifications without notice.



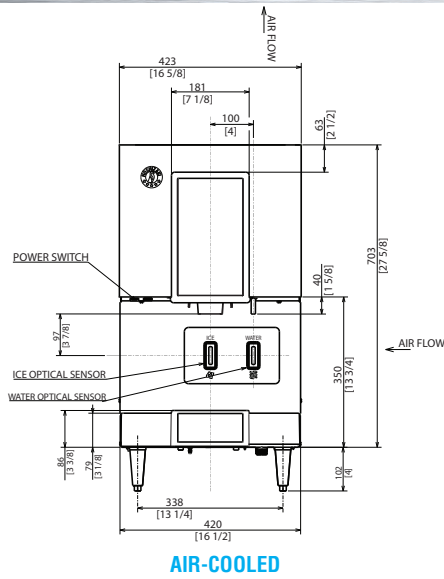
DCM-271BAH-OS



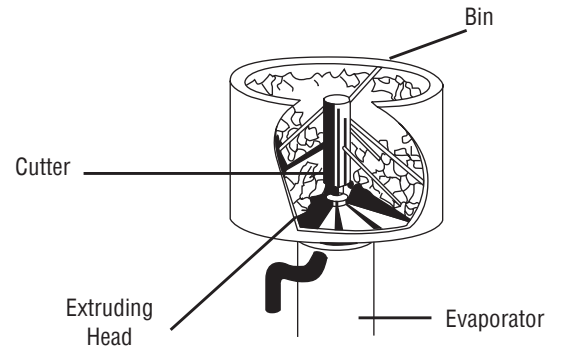
DCM-271BAH-OS
02/01/21
Item # 13574

OPTI-SERVE SERIES CUBELET ICE MACHINE AND WATER DISPENSER

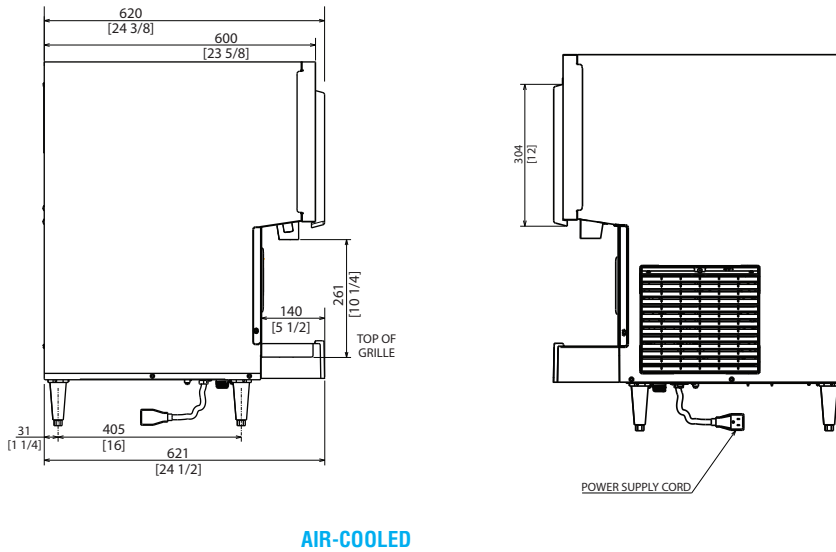
FRONT VIEW



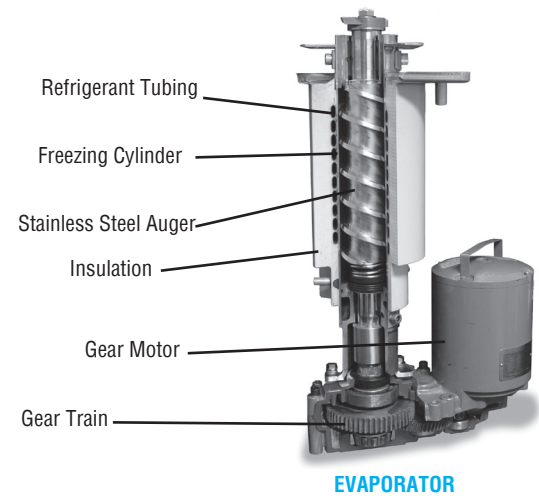
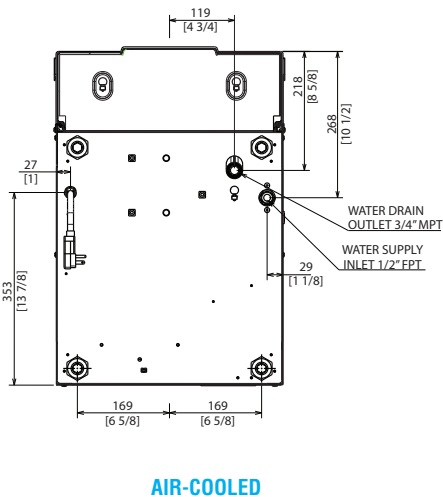
inch
[mm]



SIDE VIEW



BOTTOM VIEW



NOTE: DCM-271BAH-OS is made to pair with SD-271 stand. Placing a DCM-271BAH-OS on SD-270 stand will require a new drain hole to be cut.



CNF0201 • CNF0202

Countertop Nugget Ice Maker & Dispenser

CNF0201 • CNF0202 Countertop Nugget Ice Maker & Dispenser

Models

- CNF0201AL
 CNF0201A
 CNF0202AL
 CNF0202A

Three dispense settings are standard: ice only, water only, or ice and water.



CNF0202

CNF0201

- **New bite-sized nugget** boasts 85% ice content* with only 15% water offering one of the best nugget ratios for maximum cooling and minimal drink dilution.
- **Up to 315 lbs. (143 kgs) standard daily ice production** including ice and water content.
- **New DuraTech™ front panel** for easy cleaning and reduced hardwater staining in the dispense area.
- **Only 16.25" (41.28 cm) wide** by 24.00" (61.00 cm) deep by 35.00" (89.00 cm) tall on the CNF0202 and 42.00" (107.00 cm) tall without legs; legs sold separately.
- **Trouble-free ice dispensing.** Simply place cup under chute and activate.
- **Two ice activation options:** activation arm or touchless.
- **Bin Storage:** 10 lbs in CNF0201 and 20 lbs in CNF0202.
- Dispense opening (10.50"/ 26.67 cm) from grate to chute maximizes clearance for tall containers.
- Larger drain pan minimizes ice spillage.
- Blue LED light provides dispense visibility for rooms with limited ambient light.
- Drain connections in back or bottom of unit for flush mounting.
- Manitowoc's patented cleaning technology manages the cleaning process from start to finish.

*70/50° F



Ice Machine Electric

115/60/1. (230/50/1 also available.) 115/60/1 ice machines are factory pre-wired with a 6' (180 cm) power cord and NEMA 5-15P-plug configuration. 230/50/1 ice machines are factory pre-wired with a 6' (180 cm) power cord only, no plug is supplied.

Total ampacity: Air-cooled: 10.3 amps.

Maximum fuse size: Air-cooled: 15 amps.

HACR-type circuit breakers can be used in place of fuses.

Specifications

BTU Per Hour:
2,300 (average)

Compressor:
Nominal rating: 1/3 HP
Refrigerant: R404A

- Operating Limits:
- Ambient Temperature Range: 45° -110° F (7.2° -43.3° C)
 - Water Temperature Range: 45° -90° F (7.2° -32° C)
 - Water Pressure Ice Maker
Water In:
Min. 20 psi (137.9 kPa)
Max. 80 psi (551.1 kPa)

Ice Shape

Nugget ice consists of small pieces ranging from 3/8" to 1/2" in width and length on average. Offers a 85% ice to water ratio with a softer, chewable texture while still providing maximum cooling effect and great dispensibility.





Model	Ice Shape	Ice Production 24 Hours		Power kWh/ 100 lbs. @ 90°/70°F 32°/21°C
		70°Air/50°F Water 21°Air/10°C Water	90°Air/70°F Water 32°Air/21°C Water	
CNF0201A	nugget	315 lbs.	222 lbs.	6.69
		143 kgs	101 kgs	
CNF0202A	nugget	315 lbs.	222 lbs.	6.69
		143 kgs	101 kgs	
Water usage/100 lbs./45.4 kgs of ice				
Potable Water: 12 gallons, 45.4 liters				

*"A" following model number indicates "Air" condensing unit.

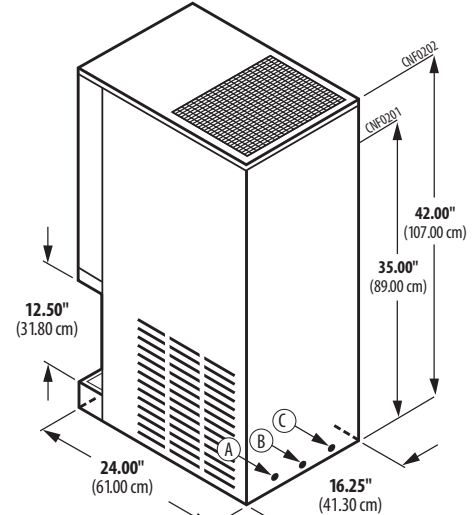
Space-Saving Designs



	CNF0201	CNF0202
Height*	35.00" 89.00 cm	42.00" 107.00 cm
Width	16.25" 41.30 cm	16.25" 41.30 cm
Depth	24.00" 61.00 cm	24.00" 61.00 cm
Bin Storage	10 lbs. 4.5 kgs	20 lbs. 9.1 kgs

*Height without legs. Legs sold separately: K-00345.

CNF0201/202



- (A) 3/8" (0.95 cm) F.P.T. Ice Making Water Inlet
- (B) 3/4" (1.91 cm) Bin Drain
- (C) Electrical Entrance

MINIMUM INSTALLATION CLEARANCE –
Top: 24" (60.96 cm); Sides: 8" (20.32 cm); Back: 5" (12.7 cm); Bottom: 0" (0 cm).

CNF Stand

Kit Number	W x D x H	Shipping Weight
K-00453	22.2 x 29.2 x 36"	100 lbs
	56.4 x 74.2 x 76.2 cm	50 kgs



*Height includes 6" legs

Stand offers a solution when there is no counter space available for an CNF0201 or 202 unit.

CNF0201N/202N

Solid Front Panel

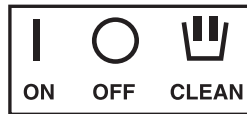
Shipped with ice/water option selected. Solid front panel makes machine completely touch-free.



Air Flow Front View

Air in right, air out top.

Front Access



Initiate ice, off and clean operations with simple upfront selector switch. No need to remove front panel.

Lever-activated or Touchless Dispensing*



CNF0201L
CNF0202L



CNF0201
CNF0202

*Select at time of purchase. K-00377 can be used to convert from lever-activated to touchless sensing.

Appliances Guidelines (Laboratory)

LABORATORY REFRIGERATOR

Vendor: Minus 11
Contact: Peter Harrington
Email: pharrington@minuseleven.com

MEDICAL GRADE REFRIGERATOR

Vendor: Minus 11
Contact: Peter Harrington
Email: pharrington@minuseleven.com

PHARMACEUTICAL REFRIGERATOR

Vendor: Minus 11
Contact: Peter Harrington
Email: pharrington@minuseleven.com

LABORATORY FREEZER (-80 DEG C)

Vendor: Stirling Model SU780XLE
Vendor: PHCBI VIP ECO

LABORATORY REFRIGERATOR - UNDERCOUNTER

Vendor: Minus 11
Contact: Peter Harrington
Email: pharrington@minuseleven.com

MEDICAL GRADE REFRIGERATOR - UNDERCOUNTER

Vendor: Minus 11
Contact: Peter Harrington
Email: pharrington@minuseleven.com

PHARMACEUTICAL REFRIGERATOR - UNDERCOUNTER

Vendor: Minus 11
Contact: Peter Harrington
Email: pharrington@minuseleven.com



MDF-DU702VH-PA

* Specification deviations allowed per PM approval-(photos are just examples)*

All equipment needs to go through inventory control and get a service tag.

Model SU780XLE Upright Ultra-Low Temperature Freezer

Use 70-75% Less Energy, with the Industry's-Best
Ultra-Low Cooling Performance



Making the Industry's-Best Performing ULT Freezer Even Better

- ✓ $\pm 1^{\circ}\text{C}$ Steady-State Temperature Variation Over Time
- ✓ Faster Initial Pull-Down, Ambient to -80°C , <6.5 hours
- ✓ Fastest Door Opening Temperature Recovery, 35 minutes to -80°C
(when tested using the ENERGY STAR® Final Test Method door opening procedure)
- ✓ Slowest Warm-Up Time, 2.5 hours from -80°C to -60°C
- ✓ Real-Time Temperature Display
- ✓ Largest Storage Capacity Per Sq. Ft. of Floor Space
- ✓ Plugs into Any Outlet

Shown with optional inventory racks and three additional shelving units (not included). Interior dimensions accommodate optional inventory racks up to five standard boxes deep. Removable shelves are adjustable on 1/2" (12.7 mm) centers.

Stirling Ultracold Model SU780XLE

Storage Volume	Voltage Range, Universal	VWR Cat. No.
780 liters (27.5 cu.ft.)	Operates from 120-240VAC at 50/60Hz	75845-814

The SU780XLE delivers strategic advantages across your entire research organization.

Protecting your Sample Integrity

- Modulated cooling capacity eliminates on/off cycling, improves quality of cold
- 100% adaptive control - faster temperature pull-down and recovery
- Superior Stirling engine reliability with only two moving parts - no compressors to fail!
- Industry-best warranty—seven years engine and thermosiphon protection, two years parts and labor coverage*

Protecting the Environment

- Uses up to 70-75% less energy than standard compressor-based systems
- Uses EPA SNAP-approved 100% natural refrigerants
- Zero Waste process and environmentally-friendly foam insulation blowing agent used in product manufacturing
- Significantly smaller operating carbon footprint than any competing product

Protecting your Operating Budget

- Reduces electric utility costs more than 70% savings in most cases
- Significantly reduces heat output and HVAC cost of operations
- Reduces floor space, facilities, infrastructure, and backup power cost
- Lowest ongoing maintenance requirements and service costs



Model SU780XLE Specifications

Application, Rating and Electric Data

Application	Storage of general (non-flammable) laboratory materials
Storage Volume	780 liters (27.5 cu.ft.)
Storage Capacity	600 standard 2" boxes in optional racks Optional 700-box system, available separately
Temperature Range	-86°C to -20°C @ 32°C (90°F) ambient, adjustable to 1°C increments
Electric Power†	120-240VAC at 50/60Hz
Maximum Power (Current)	1200 watts (10 amps @120V, 5 amps @240V), nominal
Auto-Voltage Capability	120-240VAC at 50/60Hz (automatically adjusts)
Electric Supply Rating	15 amp or greater grounded circuit
Power Plugs Available	NEMA 5-15P plug requires standard NEMA 5-15R receptacle (120V); Length: 2261 mm (89 in.), or NEMA 5-15P plug requires standard NEMA 5-15R receptacle (120V); Length: 3048 mm (120 in.), or NEMA 6-15P plug requires standard NEMA 6-15R receptacle (240V); Length: 2997 mm (118 in.). Specify when ordering
Certification/ Agency Listing	cULus, CE, and ENERGY STAR®
Noise	Advanced noise abatement, <45 dB(A) at 1 meter
Indoor/Outdoor Use	Indoor use only
Application Environment	Non-corrosive, non-flammable, non-explosive
Ambient Operating Temperature	+5°C to +35°C (41°F to 95°F)
Useful Life	12 years, nominal

Controller

Interface	Graphical user interface with touchscreen controls
Controller Type	Microprocessor with touchscreen input and display
Security	Lockable door Optional PIN requirement built in
Warm and Cold Alarms	Fully adjustable
Control Sensor	One RTD (PT100 Class B)
Event Log	All alarms, door openings
Dry Contacts	Normally closed, normally open, common; activated by power outage or any alarm condition
Temperature Log	30 days available graphically
Battery Back-Up	12 hour control battery back-up for touchscreen

Refrigeration System

Cooling Engine	Helium charged free-piston Stirling engine with continuous modulation
Heat Transport System	Gravity-driven thermosiphon
Refrigerant	R-170 (Ethane) 90 grams
Evaporator	Cold wall (inner liner)
Heat Rejection	Finned heat exchanger with forced air cooling Air inlet: Above freezer door, below mechanical compartment Air outlet: Right side of top cover, upward
Defrost Method	Manual

Performance Data

Steady State Energy Use (ENERGY STAR® Final Test Method)	6.67 kWh/day at -75°C (Weighted Average)
Pull-Down from 25°C Ambient	6.5 hours at -80° C (Empty Cabinet)
Recovery from Door Opening ENERGY STAR® Final Test Method	35 minutes at -80° C
Warm-Up Profile	2.5 hours to -60°C at -80° C (Empty Cabinet) 6.5 hours to -40°C at -80° C (Empty Cabinet)
Heat Dissipation	981 BTU/h (load to HVAC) at -80° C (Empty Cabinet)

Dimensions and Construction

Interior (H x D x W)	1542 x 705 x 740 mm (60.7 x 27.8 x 29.1 in.)
Exterior (H x D x W)	1994 x 870 x 915 mm (78.5 x 34.3 x 36 in.)
Net Weight, Two Shelves, No Load	284 kg (625 lbs.)
Shipping (H x D x W)	2184 x 1092 x 1118 mm (86 x 43 x 44 in.)
Shipping Weight	352 kg (775 lbs.)
Insulation	High performance vacuum insulated panels and polyurethane foam using Ecomate® environmentally friendly, SNAP-compliant blowing agent
Gasket Heater	User programmable duty cycle
Shelves	2 stainless steel, adjustable in 12.7 mm (0.5 in.) increments
Inner Doors	3 insulated with magnetic latches
Options	Chart recorder, CO ₂ and LN ₂ back-up systems, additional shelves, international plug(s), 4-20mA temperature output



6000 Poston Road Athens, Ohio 45701, USA

©2019 Stirling Ultracold, Global Cooling, Inc. All Rights Reserved.

Global Cooling technology is manufactured under U.S. and International patents.

Stirling Ultracold is a trademark of Global Cooling, Inc. Specifications subject to change without notice.

* Labor warranty coverage only available in the U.S. and Canada.

† There is no need for special wiring or a 20 amp breaker on a 120V line.

800 932 5000 | VWR.COM

Prices and product details are current when published and subject to change without notice. | Certain products may be limited by federal, state, provincial, or local regulations. | VWR, part of Avantor, makes no claims or warranties concerning sustainable/green products. Any claims concerning sustainable/green products are the sole claims of the manufacturer and not those of VWR International, LLC and/or Avantor, Inc. or affiliates. All prices are in US dollars unless otherwise noted. Offers valid in US and Canada, void where prohibited by law or company policy, while supplies last. | Trademarks are owned by Avantor, Inc. or its affiliates, unless otherwise noted. | Visit vwr.com to view our privacy policy, trademark owners, and additional disclaimers. © 2019 Avantor, Inc. All rights reserved.

1119 Lit. No. 070070WREV





MDF-DU702VH-PA

VIP® ECO

ENERGY STAR® Certified
Natural Refrigerant -86°C Freezer

MDF-DU702VH-PA, 220V
MDF-DU702VHA-PA, 115V

25.7 cu.ft. | 729 L



Ideal for new or replacement installations requiring a 115V or 220V connection, the VIP ECO 25.7 cu.ft. (729 L) upright ultra-low temperature freezer delivers the lowest daily energy usage.¹⁾ Performance, reliability and energy efficiency combine to secure your most valuable biological samples.

Performance and Reliability

The robust refrigeration system provides dependable cooling and temperature performance through specialty engineered heat transfer components and time-tested natural refrigerants. Reserve refrigeration power assures exceptionally fast temperature recovery following door openings. Performance and reliability are never compromised when it comes to storing your valued products.

Energy Efficient,¹⁾ Balanced Power

Smart compressors, natural refrigerants and integrated electronics combine to lower your facility's operating costs.

- 0.29 kWh/cu.ft. Daily Energy Consumption
- 8.20 kWh/day, Steady State at -80°C
- 5.91 kWh/day, Steady State at -70°C

Temperature Uniformity

- ±2.01°C at -80°C
- ±1.86°C at -70°C

Security Control and Monitoring

An eye level, door mounted color LCD touchscreen allows full user control while the USB port makes transferring logged data to a PC convenient. All performance attributes are displayed and an internal temperature log is expressed in graphic form over time.



Natural Refrigerants

Natural refrigerants minimize environmental impact without jeopardizing ultra-low temperature freezer performance.



EZlatch

EZlatch is the centerpiece of a holistic access and frost mitigation system. Simplified one-handed operation maintains the integrity of the door seal to assure energy efficiency.



Ease of Use

A full function display panel includes audible and visual warnings, unit diagnostics, temperature and door opening history.

¹⁾ Based on independent third-party testing at time of publication. ENERGY STAR test results for submitted products can be compared for performance across the competitive market. For results see the ENERGY STAR website www.energystar.gov/productfinder/product/certified-lab-grade-refrigeration/details/2303094. See Certification Number 4788723268.



VIP^{ECO} -86°C ULT Upright Freezer

MDF-DU702VH-PA, 220V MDF-DU702VHA-PA, 115V



The outer door gasket is easily removed and replaced without tools while the freezer remains in operation.

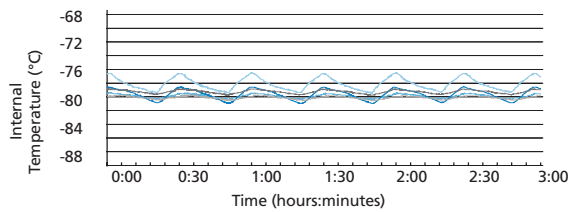
Model MDF-DU702VH-PA shown with one additional shelf to create five levels. Three shelves supplied standard. Additional shelves available.

Efficient Sample Storage

The upright cabinet design employs patented VIP Plus insulated panels that offer space efficiency. This allows the freezer cabinet to maximize storage space, holding up to 576, 2" boxes within a 9.78 sq.ft. (0.91 m²) footprint.

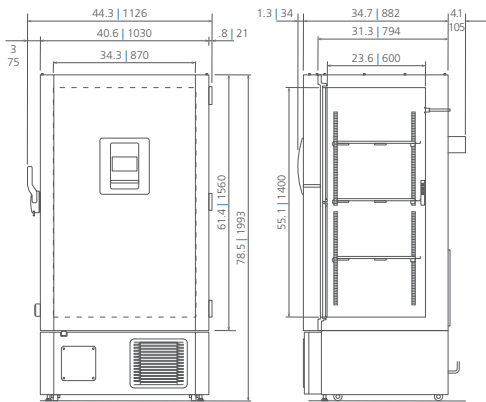
Temperature Uniformity Data:

-80°C setpoint at 23°C ambient temperature, empty freezer



Dimensions

Unit : inch | mm



Model Number		MDF-DU702VH-PA	MDF-DU702VHA-PA
External Dimensions (W x D x H) ¹⁾	inches mm	40.6 x 36.8 x 78.5	1030 x 935 x 1993
Internal Dimensions (W x D x H)	inches mm	34.3 x 23.6 x 55.1	870 x 600 x 1400
Volume	cu.ft. liters	25.7	729
Net Weight	lbs kg	613	278
Capacity (2" boxes)	qty	576	
Capacity (3" boxes)	qty	384	
Inventory Racks (2" boxes)	qty	24	
Inventory Racks (3" boxes)	qty	24	

Performance			
Warranty ²⁾		5 years parts and labor	
Cooling Performance ³⁾	°C	-40 to -86	-50 to -86
Temperature Setting Range ³⁾	°C	-50 to -90 in 1° increments	
Temperature Control Range ³⁾	°C	-50 to -86 in 1° increments	

Control			
Controller		Microprocessor, touchscreen data entry, password protected	
Display		LCD color touchscreen	
Temperature Sensor		Pt-1000	

Refrigeration			
Refrigeration System		Synchronized variable speed cascade system	
Compressors	W	(2) 750, variable speed	
Refrigerant		High-stage R-290 natural refrigerant Low-stage R-170 natural refrigerant	
Insulation Thickness, Material	inches mm	3.1 80, rigid polyurethane foam (PUF) + VIP Plus vacuum insulated panels	

Construction			
Exterior Material		Painted electrogalvanized steel	
Interior Material		Powder coated electrogalvanized steel	
Outer Door	qty	1 (key lock with provision for optional pad lock)	
Inner Doors	qty	2 (insulated, ABS, stainless steel frames, positive latches)	
Shelves	qty	3 (adjustable)	
Shelf Dimensions (W x D)	inches mm	33.6 x 21.0 855 x 534	
Max. Load per Shelf	lbs kg	110 50	
Auto Vacuum Relief	qty	1: in door	
Manual Vacuum Relief	qty	1: lower left side	
Access Ports	qty	3: upper back wall (back-up system), bottom left (recorder sensor), bottom right (access)	
Access Port Diameter	inches mm	0.6 17	
Casters	qty	4 (2 leveling feet on front base)	

Alarms (V = Visual Alarm, B = Buzzer Alarm, R = Remote Alarm)			
Power Failure		V-B-R	
Temperature (High and Low)		V-B-R	
Sensor Failure		V-B-R	
Door Open		V-B	
Battery Check		V	
Remote Alarm Contacts		DC 30V 2A (normally open, normally closed, common)	

Electrical and Noise Level			
Power Supply		220V, 1Ø, NEMA 6-15P, requires NEMA 6-15R receptacle	115V, 1Ø, NEMA 5-20P, requires NEMA 5-20R receptacle
Noise Level ⁴⁾	dB(A)	46	

Options			
Inner Door Kit with 5 Smaller Doors ⁵⁾		MDF-7ID5-PW	
Inner Door Kit with 4 Smaller Doors ⁵⁾		MDF-7ID4-PW	
Liquid CO ₂ Back-Up System		MDF-UB7-PW	

Temperature Recorder			
Circular Type	6", 7 day circular	MTRC954	
Chart Paper	52 charts per box	C7100386REV	
Ink Pen	pack of 6	R252	

Optional Communication System			
Wireless, Cloud-Based, Automatic Data Management		LabAlert® Monitoring System	

¹⁾ Exterior dimensions of cabinet excluding handle, rear stand-off brackets and other external projections. Consult product web page for doorway entry instructions, less than 36.8": www.phchd.com/us/biomedical/preservation/ultra-low-freezers/mdf-du702vhpa

²⁾ Current warranty offered at time of printing and may be subject to change; US and Canada only

³⁾ Air temperature measured at freezer center, ambient temperature +30°C, no load

⁴⁾ Nominal value, background noise 20 dB(A)

⁵⁾ Installation of small inner door kit may affect usable storage capacity



PHC Corporation of North America
1300 Michael Drive, Suite A, Wood Dale, IL 60191
Toll Free USA (800) 858-8442, Fax (630) 238-0074
www.phchd.com/us/biomedical

Specifications are subject to change without notice.

For latest specification information contact PHC Corporation of North America at info@us.phchd.com. Performance data herein is based on independent testing at time of publication.

